

SOCIAL AGREEMENT  
Between  
ATLANTIC RESOURCES, LIMITED  
And the  
COMMUNITY FORESTRY DEVELOPMENT COMMITTEES (CFDCS)  
OF  
FOREST MANAGEMENT CONTRACT (FMC) AREA-P, GRAND KRU, MARYLAND  
& RIVER GEE COUNTIES  
LIBERIA



Forestry Development Authority

MSW

MB

QWR

**LEGAL REQUIREMENT FOR THE FORMATION OF CFDC**

This Social Agreement is hereby made and entered into by and between the **Atlantic Resources Limited**, hereinafter referred to as **Atlantic**, the communities of Grand Kru, Maryland & River Gee, Community Forest Development Committee (CFDC), hereinafter referred to as the Communities, for Forest Management Contract Area "P", and attested to as to its completeness by the Forestry Development Authority, Monrovia, Liberia, hereinafter referred to as the FDA, under the provisions of the 2006 National Forestry Reform Law, and FDA Regulation No. 105-07 Regulation on Major Pre-felling Operations under Forest Resource Licenses.

**TECHNICAL DESCRIPTION OF THE AREA**

**Technical Description of Forest Management Contract Area- "P"**

**DESCRIPTION OF THE AREA "P"**

**Technical Description**

Forest Management Contract area "P" lies within Latitudes 4°48'0" - 5°6'0" North of the equator and Longitudes 8°0'0" - 8°18'0" West of the Greenwich Meridian and it is located in Grand Kru, Maryland and River Gee Counties. Southeastern Liberia.

Forest Management Contract area "P" is 360 miles accessible by primary motor road by way of Monrovia, Gharnga, Tappita, Zwedru and John David's Town, and is 68 miles accessible to the Port of Harper, Maryland County.

**Metes and bounds**

Starting from Bleebo Town. (4°43'50.97"N - 7°56'57.59"W) thence a line runs N 83° W for 4,178 meters to the point of COMMENCEMENT (4°44'08.82"N-7°59'11.21"W); thence a line runs Due West for 1,800 meters to a point (4°44'07.35"N-8°00'10.61"W); thence a line runs N 33° W for 2,039 meters to a point (4°45'02.99"N-8°00'46.49"W); thence a line runs N 88° W for 6,994 meters to a point (4°45'10.57"N-8°04'33.61"W); thence a line runs N 53° W for 13,435 meters to a point (4°49'34.41"N-8°10'20.62"W); thence a line runs N 3° E for 3,630 meters to a point (4°51'31.73"N-8°10'15.03"W); thence a line runs S 64° E for 423 meters to a point (4°51'25.70"N-8°10'02.81"W); thence a line runs S 45° E for 390 meters to a point (4°51'16.85"N-8°09'53.78"W); thence a line runs N 56° E for 326 meters to a point (4°51'22.69"N-8°09'44.98"W); thence a line runs S 82° E for 611 meters to a point (4°51'19.68"N-8°09'25.22"W); thence a line runs S 13° E for 2,104 meters to a point (4°50'13.57"N-8°09'09.59"W); thence a line runs S 79° E for 508 meters to a point (4°50'10.23"N-8°08'53.36"W); thence a line runs N 1° W for 882 meters to a point (4°50'38.81"N-8°08'54.06"W); thence a line runs N 30° E for 848 meters to a point (4°51'02.45"N-8°08'40.35"W); thence a line runs N 6° W for 1,353 meters to a point (4°51'46.04"N-8°08'44.73"W); thence a line runs N 10° E for 597 meters to a point (4°52'05.06"N-8°08'41.22"W); thence a line runs N 6° W for 1,029 meters to a point (4°52'38.12"N-8°08'44.57"W); thence a line runs Due East for 533 meters to a point (4°52'38.12"N-

W/R                      KDW                      P.W.D

8°18'24.90"W); thence a line runs N 2° W for 232 meters to a point (4°59'01.20"N-8°18'25.22"W); thence a line runs N 19° W for 412 meters to a point (4°59'13.88"N-8°18'29.54"W); thence a line runs N 37° W for 319 meters to a point (4°59'22.10"N-8°18'35.87"W); thence a line runs Due North for 497 meters to a point (4°59'38.20"N-8°18'35.87"W); thence a line runs N 11° E for 178 meters to a point (4°59'43.91"N-8°18'34.78"W); thence a line runs N 28° W for 114 meters to a point (4°59'47.12"N-8°18'36.47"W); thence a line runs N 88° W for 355 meters to a point (4°59'47.48"N-8°18'48.06"W); thence a line runs N 75° W for 763 meters to a point (4°59'53.88"N-8°19'12.04"W); thence a line runs N 37° W for 236 meters to a point (4°59'59.96"N-8°19'16.69"W); thence a line runs N 35° E for 380 meters to a point (5°00'10.07"N-8°19'09.60"W); thence a line runs N 15° E for 248 meters to a point (5°00'17.84"N-8°19'07.51"W); thence a line runs N 45° E for 498 meters to a point (5°00'29.30"N-8°18'56.10"W); thence a line runs N 4° E for 118 meters to a point (5°00'33.13"N-8°18'55.82"W); thence a line runs N 22° W for 170 meters to a point (5°00'38.22"N-8°18'57.86"W); thence a line runs N 5° E for 275 meters to a point (5°00'47.08"N-8°18'57.06"W); thence a line runs N 7° W for 389 meters to a point (5°00'59.60"N-8°18'58.53"W); thence a line runs N 31° E for 335 meters to a point (5°01'08.80"N-8°18'52.88"W); thence a line runs N 3° E for 3,646 meters to a point (5°03'06.45"N-8°18'46.90"W); thence a line runs N 40° E for 388 meters to a point (5°03'15.97"N-8°18'38.80"W); thence a line runs S 48° E for 224 meters to a point (5°03'11.21"N-8°18'33.40"W); thence a line runs N 54° E for 329 meters to a point (5°03'17.52"N-8°18'24.79"W); thence a line runs N 10° E for 364 meters to a point (5°03'29.00"N-8°18'22.71"W); thence a line runs N 43° E for 377 meters to a point (5°03'37.69"N-8°18'14.30"W); thence a line runs Due North for 345 meters to a point (5°03'48.87"N-8°18'14.41"W); thence a line runs N 48° E for 301 meters to a point (5°03'55.18"N-8°18'07.25"W); thence a line runs N 8° E for 348 meters to a point (5°04'06.46"N-8°18'05.69"W); thence a line runs N 23° W for 309 meters to a point (5°04'15.56"N-8°18'09.63"W); thence a line runs N 63° E for 564 meters to a point (5°04'23.94"N-8°17'53.34"W); thence a line runs N 76° E for 892 meters to a point (5°04'30.97"N-8°17'25.21"W); thence a line runs N 70° E for 815 meters to a point (5°04'40.02"N-8°17'00.34"W); thence a line runs S 84° E for 136 meters to a point (5°04'39.57"N-8°16'55.99"W); thence a line runs N 4° E for 175 meters to a point (5°04'45.23"N-8°16'55.62"W); thence a line runs N 85° E for 517 meters to a point (5°04'46.73"N-8°16'38.90"W); thence a line runs N 54° E for 575 meters to a point (5°04'57.64"N-8°16'23.87"W); thence a line runs N 24° E for 328 meters to a point (5°05'07.38"N-8°16'19.64"W); thence a line runs N 27° W for 260 meters to a point (5°05'14.80"N-8°16'23.43"W); thence a line runs N 47° E for 561 meters to a point (5°05'27.24"N-8°16'10.13"W); thence a line runs N 77° E for 442 meters to a point (5°05'30.44"N-8°15'56.13"W); thence a line runs N 42° E for 700 meters to a point (5°05'47.09"N-8°15'40.82"W); thence a line runs N 15° E for 866 meters to a point (5°06'14.36"N-8°15'33.69"W); thence a line runs N 26° E for 1,708 meters to a point (5°07'03.84"N-8°15'09.19"W); thence a line runs N 36° E for 453 meters to a point (5°07'15.65"N-8°15'00.45"W); thence a line runs N 24° E for 558 meters to a point (5°07'32.15"N-8°14'53.01"W); thence a line runs N 84° E for 542 meters to a point (5°07'33.87"N-8°14'35.53"W); thence a line runs N 23° E for 168 meters to a point (5°07'38.87"N-8°14'33.40"W); thence a line runs S 78° E for 449 meters to a point (5°07'35.78"N-8°14'19.13"W); thence a line runs N 79° E for 265 meters to a point (5°07'37.48"N-8°14'10.67"W); thence a line runs S 81° E for 365 meters to a point moving away from the Proposed Protected Area boundary line (5°07'35.65"N-8°13'58.94"W); thence a line runs N 54° E for 10,711 meters to a point near the Dweken, Nyonken motor road (5°10'58.47"N-8°09'17.50"W); thence a line runs N 89° E for 7,742 meters to a point across the Grand Cess/Nuch River (5°11'04.09"N-8°05'05.13"W); thence a line runs S 72° E for 14,491 meters to a point near the Si creek (5°08'38.15"N-7°57'40.17"W); thence a line runs S 5° W for 1,133 meters

MAM

MR

P. W. D

8°08'27.26"W); thence a line runs S 72° E for 750 meters to a point (4°52'30.54"N-8°08'04.16"W); thence a line runs N 53° E for 3,261 meters to a point (4°53'34.40"N-8°06'39.66"W); thence a line runs N 81° E for 1,146 meters to a point (4°53'40.02"N-8°06'03.08"W); thence a line runs S 63° E for 813 meters to a point (4°53'28.25"N-8°05'39.36"W); thence a line runs S 78° E for 1,009 meters to a point (4°53'21.48"N-8°05'07.37"W); thence a line runs N 7° W for 720 meters to a point (4°53'44.72"N-8°05'10.04"W); thence a line runs N 71° W for 1,233 meters to a point (4°53'58.07"N-8°05'47.88"W); thence a line runs N 34° W for 473 meters to a point (4°54'10.75"N-8°05'56.51"W); thence a line runs N 29° W for 555 meters to a point (4°54'26.42"N-8°06'05.00"W); thence a line runs N 1° E for 613 meters to a point (4°54'46.23"N-8°06'04.56"W); thence a line runs N 20° W for 472 meters to a point (4°55'00.56"N-8°06'09.93"W); thence a line runs N 58° W for 565 meters to a point (4°55'10.20"N-8°06'25.52"W); thence a line runs Due North for 432 meters to a point (4°55'24.20"N-8°06'25.64"W); thence a line runs Due East for 592 meters to a point (4°55'24.06"N-8°06'06.37"W); thence a line runs N 2° E for 4,818 meters to a point (4°57'59.92"N-8°06'00.54"W); thence a line runs N 81° W for 2,629 meters to a point (4°58'12.83"N-8°07'24.90"W); thence a line runs N 15° E for 1,885 meters to a point (4°59'11.45"N-8°07'08.28"W); thence a line runs Due West for 2,015 meters to a point (4°59'11.45"N-8°08'13.75"W); thence a line runs Due North for 1,707 meters to a point (5°00'06.70"N-8°08'13.75"W); thence a line runs N 88° W for 2,984 meters to a point (5°00'10.33"N-8°09'50.66"W); thence a line runs S 45° W for 4,035 meters to a point (4°58'37.99"N-8°11'23.42"W); thence a line runs N 73° W for 847 meters to a point (4°58'46.29"N-8°11'49.66"W); thence a line runs S 56° W for 1,007 meters to a point (4°58'27.87"N-8°12'16.68"W); thence a line runs S 74° W for 1,311 meters to a point (4°58'16.32"N-8°12'58.12"W); thence a line runs N 32° W for 295 meters to a point (4°58'24.42"N-8°13'03.20"W); thence a line runs S 72° W for 2,080 meters to a point (4°58'03.93"N-8°14'07.60"W); thence a line runs S 4° W for 463 meters to a point (4°57'49.22"N-8°14'08.62"W); thence a line runs S 45° W for 1,467 meters to a point (4°57'15.78"N-8°14'42.10"W); thence a line runs S 68° W for 961 meters to a point (4°57'04.14"N-8°15'11.15"W); thence a line runs S 41° W for 548 meters to a point (4°56'50.73"N-8°15'22.79"W); thence a line runs S 30° E for 781 meters to a point (4°56'28.72"N-8°15'10.06"W); thence a line runs S 76° W for 3,716 meters to the point on the Grand Kru-River Gee Proposed Protected Area boundary line (4°55'59.85"N-8°17'07.16"W); thence a line runs Due North for 141 meters to a point (4°56'04.41"N-8°17'07.13"W); thence a line runs N 38° E for 266 meters to a point (4°56'11.22"N-8°17'01.82"W); thence a line runs N 25° E for 181 meters to a point (4°56'16.56"N-8°16'59.36"W); thence a line runs N 4° E for 164 meters to a point (4°56'21.91"N-8°16'58.96"W); thence a line runs N 16° W for 434 meters to a point (4°56'35.44"N-8°17'02.84"W); thence a line runs N 33° W for 724 meters to a point (4°56'55.14"N-8°17'15.64"W); thence a line runs N 5° E for 152 meters to a point (4°57'00.05"N-8°17'15.20"W); thence a line runs N 28° E for 276 meters to a point (4°57'07.97"N-8°17'11.01"W); thence a line runs N 14° W for 317 meters to a point (4°57'17.97"N-8°17'13.47"W); thence a line runs N 21° W for 215 meters to a point (4°57'24.39"N-8°17'16.02"W); thence a line runs N 41° W for 279 meters to a point (4°57'31.22"N-8°17'22.00"W); thence a line runs N 69° W for 242 meters to a point (4°57'34.03"N-8°17'29.47"W); thence a line runs N 26° W for 280 meters to a point (4°57'42.17"N-8°17'33.33"W); thence a line runs N 61° W for 274 meters to a point (4°57'46.47"N-8°17'41.11"W); thence a line runs N 36° W for 380 meters to a point (4°57'56.46"N-8°17'48.28"W); thence a line runs N 64° W for 658 meters to a point (4°58'05.79"N-8°18'07.50"W); thence a line runs N 26° W for 760 meters to a point (4°58'27.85"N-8°18'18.07"W); thence a line runs N 56° W for 238 meters to a point (4°58'32.15"N-8°18'24.52"W); thence a line runs N 14° W for 321 meters to a point (4°58'42.22"N-8°18'27.08"W); thence a line runs N 11° E for 357 meters to a point (4°58'53.64"N-

MR

APDW  
EWD

to a point (5°08'01.65"N-7°57'43.20"W); thence a line runs S 61° E for 4,261 meters to a point (5°06'54.14"N-7°55'42.04"W); thence a line runs S 60° W for 6,888 meters to a point (5°05'03.30"N-7°58'56.08"W); thence a line runs S 3° W for 3,711 meters to a point (5°03'03.39"N-7°59'03.22"W); thence a line runs S 87° W for 4,981 meters to a point (5°02'53.52"N-8°01'45.02"W); thence a line runs S 17° W for 2,116 meters to a point crossing the Gi creek and the Gleke, Jarblaken, Dweken, Martuken and Gortorken motor road to a point (5°01'48.29"N-8°02'04.73"W); thence a line runs S 2° W for 5,749 meters to a point (4°58'41.98"N-8°02'11.57"W); thence a line runs S 73° E for 7,021 meters to a point (4°57'33.93"N-7°58'34.47"W); thence a line runs S 18° E for 7,628 meters to a point (4°53'38.44"N-7°57'19.91"W); thence a line runs N 84° E for 2,823 meters to a point (4°53'48.79"N-7°55'48.69"W); thence a line runs S 36° E for 1,386 meters to a point (4°53'12.54"N-7°55'23.29"W); thence a line runs S 10° E for 5,944 meters to a point (4°50'02.66"N-7°54'48.07"W); thence a line runs Due South for 5,137 meters to a point near the Newaken, Bleebo town motor road (4°47'16.36"N-7°54'47.49"W); thence a line runs S 54° W for 9,972 meters to the point of commencement (4°44'08.82"N-7°59'11.21"W), embracing (One Hundred and Nineteen Thousand Three Hundred and Forty Four) 119.344 hectares of forest land and no more.

M.R


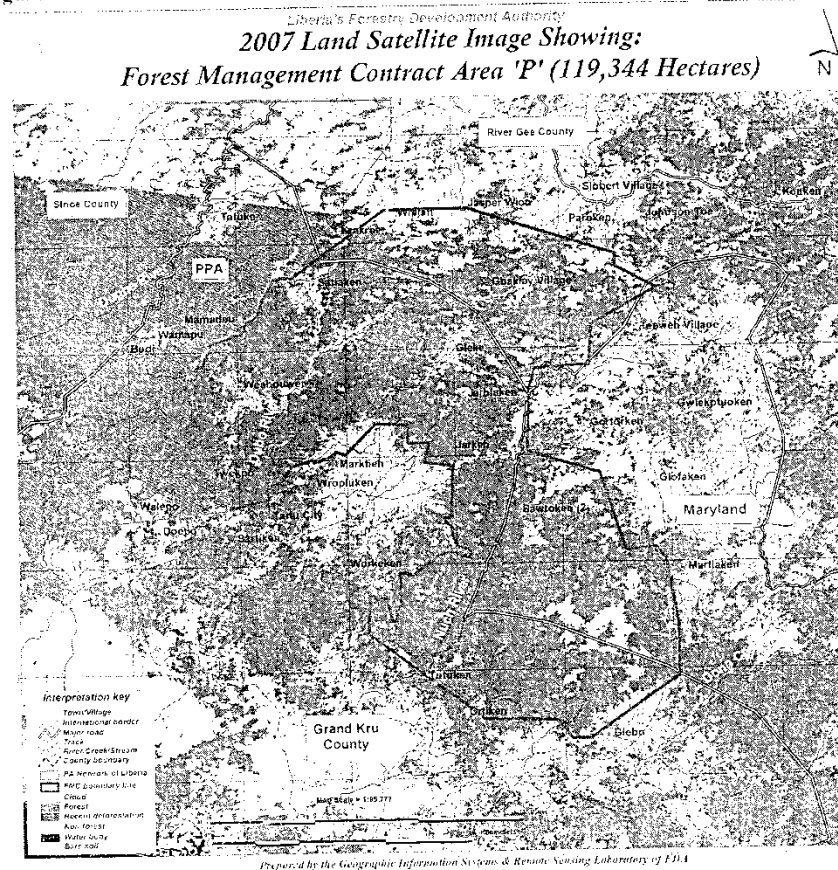
M.B.W  
A.W. 

Figure 1: 2007 Land satellite Image Map of the area (30 meters resolution)



The Forest Management Contract area "P" was awarded to **Atlantic Resources Limited**. In the preparation of the Forest Management Contract area "P", notice was given and surveys conducted in a portion of the affected **communities**. The purpose of these surveys was to validate whether the area was suitable for commercial forest practices based upon ecological, economic and social considerations. As part of this survey, the affected communities were informed of the potential FMC in the vicinity and the requirements for a social agreement. As a result of this, the FDA secured a statement on behalf of affected communities around the Forest Management Contract area "P" that they intend to negotiate a social agreement in good faith with the winner of the competitive bid.

WR

MKW

A.W.D

---

**SECTION I PURPOSE/ OBJECTIVE:**

The Social Agreement is an agreement, between communities around a given logging contract area and the logging company authorized to operate in that area, which establishes the relationship between community and company.

The Social Agreement is an agreement required by FDA Regulation No. 105-07 between any company that plans to harvest timber and the affected communities that could be affected by that commercial activity.

Social Agreements are:

- a) Only established between companies that have been authorized by the FDA through the competitive bidding process and affected communities<sup>1</sup>;
- b) To establish a code of conduct regarding rights and responsibilities of the company and affected communities.
- c) To establish the financial benefits for all affected communities with respect to section 34 of FDA Regulation No. 105-07 Regulation on Major Pre-felling Operations under Forest Resource Licenses.
- d) Negotiated directly between companies and local communities; and
- e) Attested to and regulated by the FDA. However, the FDA does not play an active role in the negotiation process beyond serving as a facilitator or mediator if discussions break down.

**SECTION II. STATEMENT OF MUTUAL BENEFIT AND INTEREST:**

The **ATLANTIC RESOURCE LIMITED** and Forest Management Contract Area "P" **Community Forestry Development Committee (CFDC) of Maryland, Grand Kru & River Gee** communities, strive to engage in a mutually beneficial relationship by agreeing to the terms of this agreement. Working cooperatively in the on-going implementation of the FMC will allow the affected communities and the **Atlantic Resources Limited** to achieve their respective goals.

In consideration of the above premises, the parties hereto agree as follows:

**SECTION III THE DUTY AND RESPONSIBILITIES OF *Atlantic Resources Limited*, (HOLDER):**

The Holder shall identify the representative of the Timber Company designated by the Company to represent it in negotiating the terms of a social agreement. Corporation representatives must include:

---

MB

MBM  
P. WOOD

(1) Persons whose names are maintained on the list of names identified in the Corporation pre-qualification documents or has such documentation to verify his employment with the company and has the power to negotiate on the company's behalf; and

(2) In the event that this person is unable to negotiate with the Affected Community, any other person that the Company may designate, subject to the requirements of this Paragraph.

The Holder shall maintain a list of **community** representatives for its FMC.

The Holder shall conclude a negotiated agreement of the following issues, rights and responsibilities:

- That **Atlantic** agreed to design its logging operations to minimize effects on traditional practices such as taboo day, sacred sites, and the range of taboo animals/plants, medicinal plant sites, hunting ground, non timber forest products sites;
- **Atlantic** agreed to ensure that water collection points are protected and maintained;
- **Atlantic** agreed that timber operations are timed to minimize disruption to subsistence agricultural activities;
- **Atlantic** agreed that timber operations respect the existing cash crops;
- **Atlantic** agreed to participate in **community** development programs (such as human resource development, construction of school, clinic, etc);
- **Atlantic** agreed to provide transportation during emergency situation and major development activity;
- **Atlantic** agreed to pay \$1.50 USD/ cubic meter to the **community Forestry Development Committee** apart from the payment of 30% land rental (\$2.50 per hectare) to the **community** benefit sharing scheme;
- **Atlantic** agreed to build company camps near existing towns or affected areas;
- **Atlantic** agreed not to harvest palm trees for processing , bridge construction and or export;
- **Atlantic** agreed not to construct logged bridges on primary roads;
- **Atlantic** agreed to have CFDC representative verify production;
- **Atlantic** agreed to provide first preference for employment for skill and unskilled employees of the affected communities in Maryland, Grand Kru and River Gee Counties;
- **Atlantic** agreed to recondition and maintain roads adjacent to the contract areas and connect nearby towns;
- **Atlantic** agreed to make available timber products to the community during **community** development project;
- **In addition to the quarterly meetings, Atlantic** shall hold emergency meetings with the CFDC's and affected **community** to discuss any issues affecting the community when the need arises;

M/R

M/W  
E.W.D



- **Atlantic** agreed to construct schools for the education of employees dependents;
- **Atlantic** agrees that the community shall use, free of charge, any roads constructed and/or maintained by **Atlantic**; provided, however, that such use shall not unduly prejudice nor interfere with either party.

#### **SECTION IV. DUTIES AND RESPONSIBILITIES OF AFFECTED COMMUNITIES:**

The Affected **Communities** shall identify their representatives through the election of their members to a **Community Forestry Development Committee**. The **Community Forestry Development Committee** is responsible for representing the affected communities in negotiating the terms of a social agreement. **Community Forestry Development Committees** must abide by the following conditions:

- (a) A **Community Forestry Development Committee** must consist of at least five members who are residents of the community or communities that the Committee represents.
- (b) All members of a **Community Forestry Development Committee** must be freely and fairly elected by residents of the community or communities represented by the Committee.
- (c) A **Community Forestry Development Committee** must provide a means for all residents that it represents, including women and youth, to have their views heard and considered.
- (d) Prior to the disbursement of funds, a **Community Forestry Development Committee** must be incorporated under the laws of the Republic.

#### **Code of Conduct**

- The **community** agreed to avoid the expansion of subsistent agriculture activities within Contract Area. Hence community shall promote and encourage low land agriculture development;
- The **community** agreed to discourage unnecessary fire disposal and encourage fire safe practices especially in contract area;
- Existing cash crops will be identified and Company inform by the **community** to not conflict with harvest operations;
- The affected **community** can request transportation during emergency and some major **community** development programs.

MR

MDW  
 (S.W.A)

**SECTION V. DUTIES AND RESPONSIBILITIES OF THE FORESTRY DEVELOPMENT AUTHORITY:**

- A.** Ensure that the FMC is authorized so that all terms and conditions of the License are met.
- B.** Ensure that the Operations of the Holder are in compliance with the FMC.
- C.** Distribute copies of agreement;
  - ❖ Original to FMC Holder,
  - ❖ Community Forestry Development Committee (CFDC)
  - ❖ The FDA Managing Director

M/R

M/DW  
A. W. T. D.

**SECTION VI. IT IS MUTUALLY AGREED AND UNDERSTOOD BY AND BETWEEN THE PARTIES THAT:**

**A. PRINCIPAL CONTACTS.** The principal contacts for this agreement are:

**1. Atlantic Resource Ltd.  
Mr. Matthew Jallah  
Incorporator  
Atlantic Resource Ltd.**

**2. Community Forest Development  
Committee  
Cell #  
Email:**

Phone:  
Email:

**3. Forestry Development  
Authority:  
Hon. John T. Woods  
Phone: +231-06-564-070  
Email:**

- B.** It is the intent of this agreement that the parties may modify this agreement by mutual agreement. The FDA will need to attest to its completeness prior to any modifications going into effect.
- C.** The parties will maintain lines of communication regarding operations and specifically provide periodic updates to the chairperson regarding any issues in implementing the social agreement. The update should specifically provide information as to the volume of logs removed to date.
- D.** The parties will hold an annual meeting with representatives of the Community Forestry Development Committee, FDA and authorized representatives of the FMC Holder to discuss the upcoming annual operating plan as well as attempt to resolve any issues identified from the previous operating season.
- E.** The parties may provide support and assistance to each other in seeking grant and alternative funding opportunities via letters of support and work on grant applications.

MR

MBM  
E.W.

**SECTION VII. REAL PROPERTY IMPROVEMENTS.**

Any improvements (facilities, roads, etc.) developed as a result of this agreement and at the direction of either of the parties, shall thereupon become the responsibility of the affected communities, and shall be subject to the same regulations and administration as other similar improvements of a similar nature. No part of this agreement shall entitle FMC Holder to any share or interest in the project other than the right to use and enjoy the same under the existing applicable regulations.

**SECTION VIII. PARTICIPATION IN SIMILAR ACTIVITIES.**

This agreement in no way restricts the FMC Holder or Affected Communities or FDA from participating in similar activities with other public or private agencies, organizations, and individuals.

**SECTION IX. DISPUTE RESOLUTION.**

In the event of any issue of controversy under this agreement, the parties will seek to initially resolve their differences with the assistance of FDA. In the event that there are still differences, local government officials (District Commissioner, Paramount Chiefs, Clan Chief, and Town Chief) should be considered as neutral parties in a third-party mediation process. If not resolved by the steps above, any controversy or claim arising out of or relating to this agreement shall be exclusively settled by binding arbitration in accordance with the Commercial Arbitration Rules and judgment rendered by the arbitrator(s) may be entered in any court having jurisdiction thereof. The laws applicable to the dispute, the Social Agreement and the interpretation thereof are the laws of Liberia.. The arbitration shall take place at an acceptable location within the towns represented by the CFDC and the arbitral proceedings will be in English with interpreter provided for local languages.

MR

Y. B. W.  
E. W. D.

**SECTION X. AUTHORIZED REPRESENTATIVES:**

By signing below, the Chairperson of the Community Forestry Development Committee certifies that the individuals listed in this document and representatives of the Affected Communities and are authorized to act in their respective areas for matters related to this agreement. Also, by signing below, the assigned representative of the FMC Holder certifies that this individual is authorized to act in this capacity for matters related to this agreement

**SECTION XI COMMENCEMENT/EXPIRATION DATE.**

This agreement is executed as of the date of the last signature and is effective through the duration of a FMC and reviewed every 5 years for a FMC after which time it will expire.

The authority and format of this agreement has been reviewed and approved for signature.

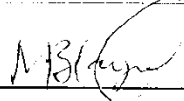
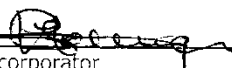

This agreement shall be binding on the parties, their heirs, administrators/trix assigns, successor -in-office as though they were physically present when this agreement was signed.

MR

P. WOOD

M. D. W.

In witness whereof, the parties hereto have executed this agreement as of the last date written below.

	Date Feb. 15, 2010
Chairperson Community Forestry Development Committee  Mr. Moses Blayon	
 Incorporator Atlantic Resource Ltd. Cllr. Peter W. Howard	Date Feb. 15, 2010
 Hon. John T. Woods Managing Director Forest Development Authority	Date 03-06-10

Affected Community as defined in the regulation is as follows: a community comprising less than a statutory district (including chiefdoms, clans, townships, towns, villages, and all human settlements) whose interests are likely to be affected by Operations carried out under a Forest Resource License. "Interests" for purposes of this definition may be an economic, environmental, health, livelihood, aesthetic, cultural, spiritual, or religious nature

MB

MHW  
 P. Woods